

Focus Pocus Installation Instruction

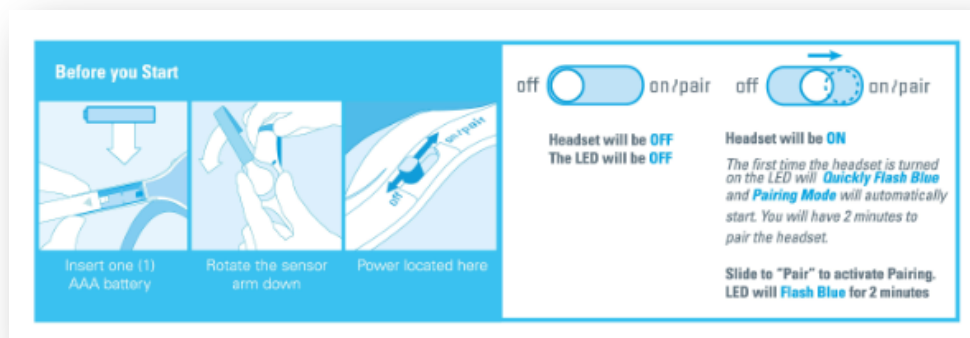
(For Windows)

- [1. Pair MindWave Mobile headset](#)
- [2. Install Focus Pocus and FocusIn](#)
- [3. Start Focus Pocus training](#)
- [4. Check the training report](#)

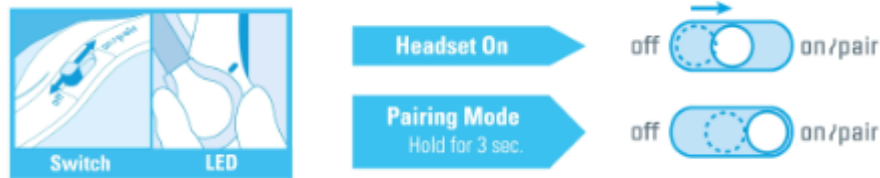
1. Pair MindWave Mobile headset

Note: If there is build-in Bluetooth on your computer, please follow below instruction to pair headset. If there is no Bluetooth on your computer, please prepare one Bluetooth dongle, install Bluetooth dongle driver and follow the Bluetooth driver software instruction to pair headset.

1-1. Start. Please prepare one AAA battery and read below picture for headset switch mode.



1-2. Switch headset to pairing mode. Turn on the headset. Pairing mode should start automatically with the LED quickly flashing blue(2/sec). If it does not, hold the power switch in the "ON" position for 3 seconds until it flashes. It is now in pairing mode.



1-3. Pair headset

1-3-1. WINDOWS 8

- a. Click **Setting**, then **Control Panel**
- b. Select **Devices and Printers**
- c. Click **Add Device**
- d. Select **MindWave Mobile** and click **Next**
- e. Click **Close** to complete pairing

1-3-2. WINDOWS 7

- a. Click **Start**, then **Control Panel**
- b. Click **View by: small icons**(in the top right-hand corner)
- c. Select **Devices and Printers**
- d. Click **Add Device**
- e. Select **MindWave Mobile** and click **Next**
- f. Click **Close** to complete pairing

1-3-3. WINDOWS VISTA

- a. Click **Start**, then **Control Panel**
- b. Open **Bluetooth Devices**
- c. Select **MindWave Mobile** and click **Next**
- d. Click **Apply**
- e. Click **Close** to complete pairing

1-3-4. WINDOWS XP

- a. Click **Start**, then **Control Panel**
- b. Click **Bluetooth Devices**
- c. Select the **Devices** tab and click **Add**
- d. Check **"My device is setup and ready to be found"**
- e. Select **MindWave Mobile** and click **Next**
- f. Select **"Let me choose my own passkey"**, enter **0000**
- g. Click **Finish** to complete pairing

If successful, the Bluetooth software will indicate paired and/or connected, and the headset's light will slowly flash blue(1/sec).

2.Install Focus Pocus and FocusIn

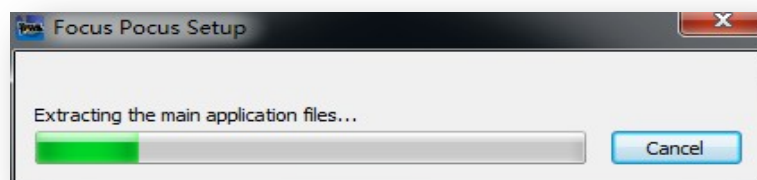
2-1 Install Focus Pocus

After finish pairing headset, please start install Focus Pocus.

2-1-1. Insert **Focus Pocus** disc and open it in **My Computer**

2-1-2. In the CD driver directory, open **Windows** folder, double click “**Focus Pocus-Setup.exe**” to start installation.

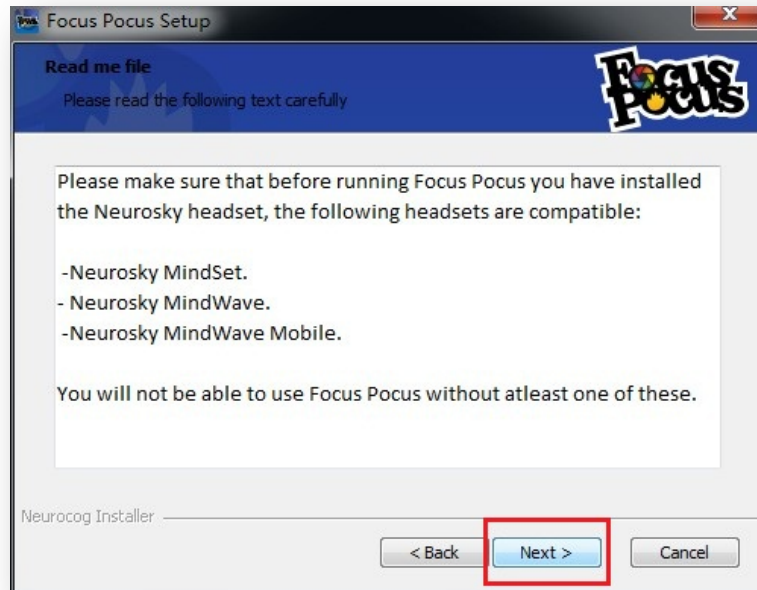
2-1-3. Wait a moment, system will be extracting the installation files



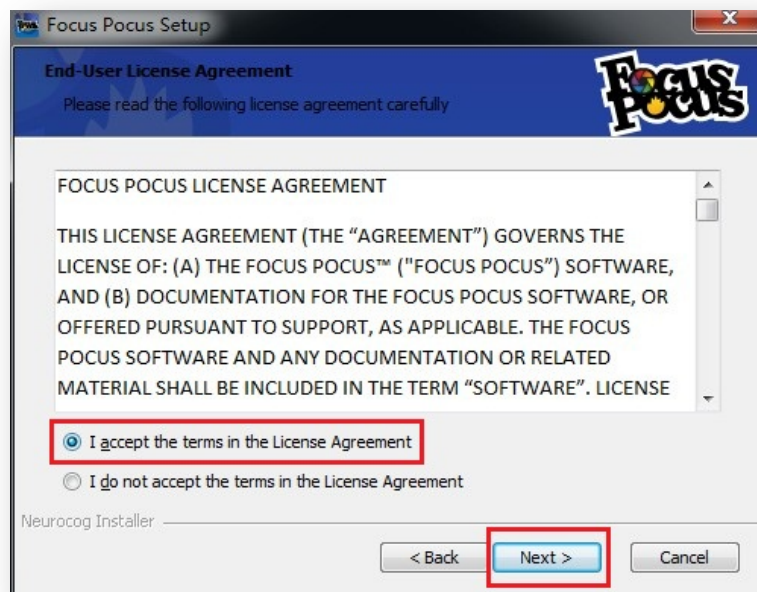
2-1-4. Click “Next”



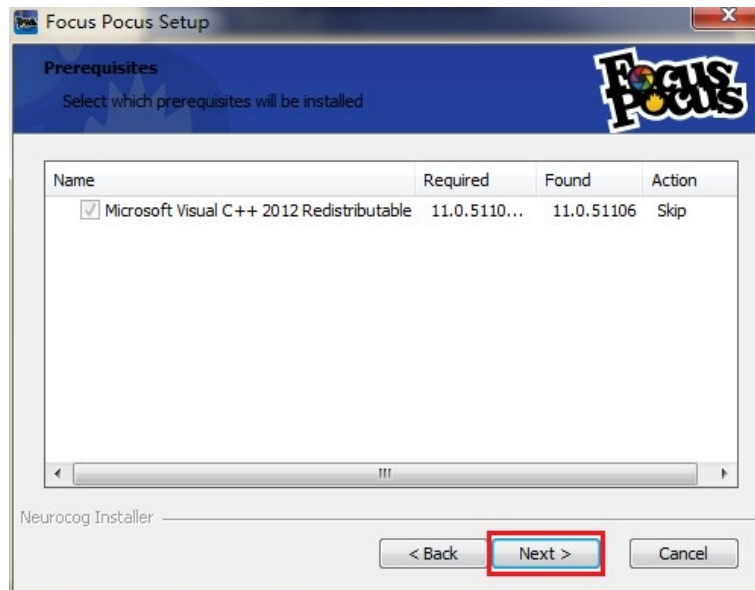
2-1-5. Click “Next”



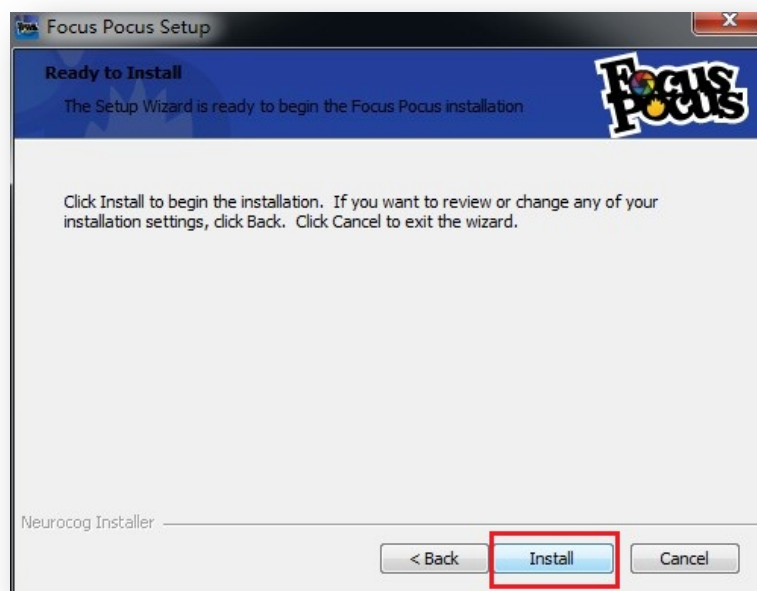
2-1-6. Read the End-User License Agreement, select “**I accept the terms in the License Agreement**”, then click “**Next**”



2-1-7. Make sure “**Microsoft Visual C++2012 Redistributable**” is checked, then click “**Next**”



2-1-8. Click “Install”



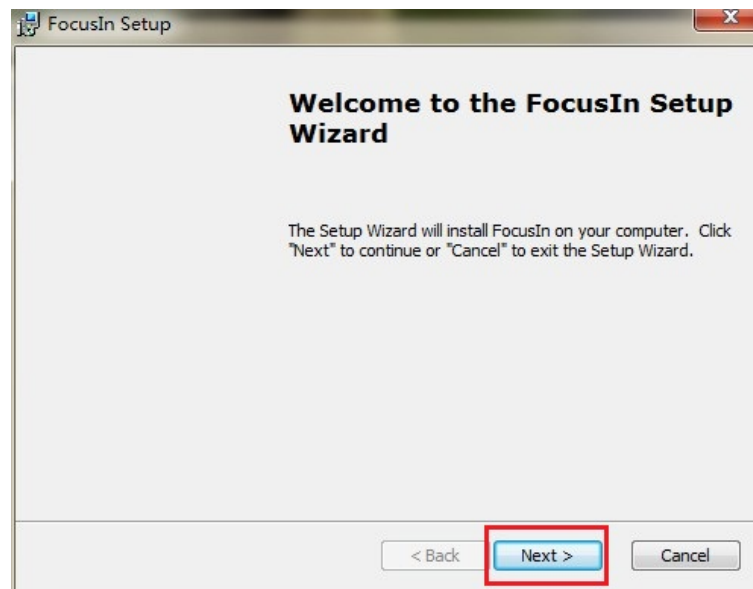
2-1-9. Click “Finish”, Focus Pocus will auto-launch. If you don’t want to auto-launch Focus Pocus, please uncheck “Launch Focus Pocus”.



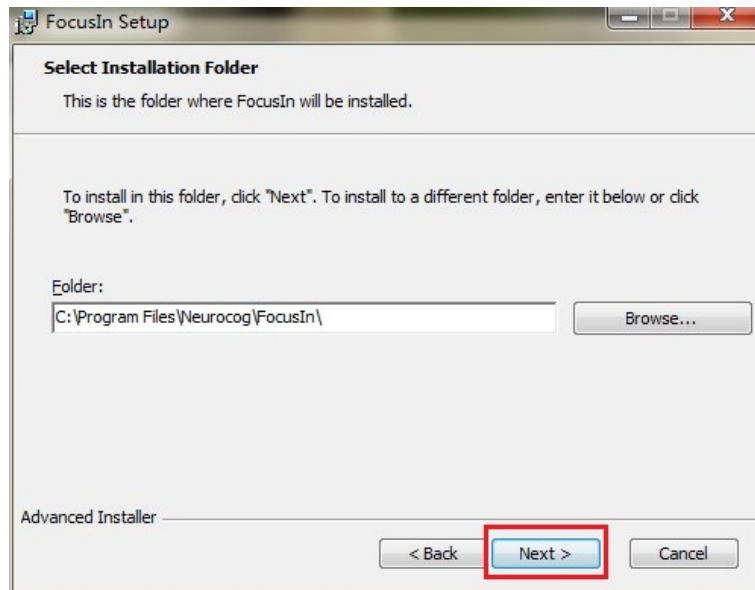
You can also launch Focus Pocus by Focus Pocus desktop shortcut or from Start->All programs->Neurocog folder.

2-2 Install FocusIn

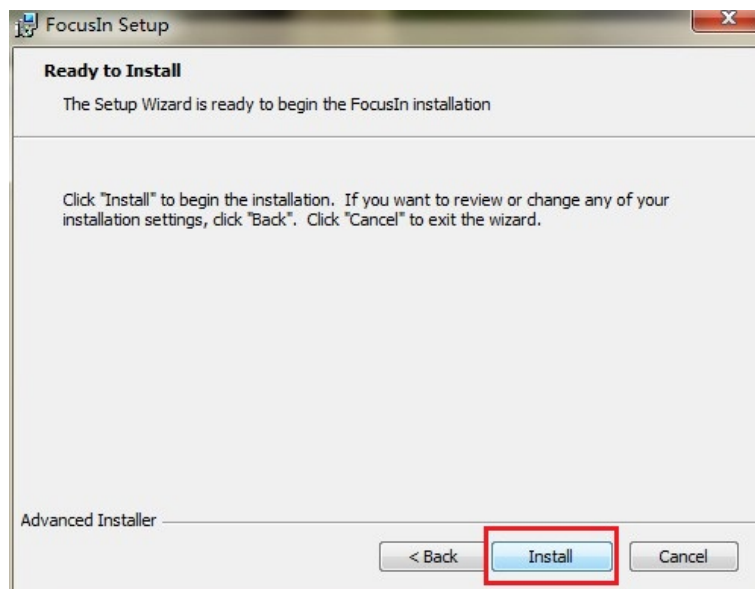
2-2-1. In the CD driver directory, open **Windows** folder, double click “**FocusIn-Setup.exe**” to start installation. Click **Next**,



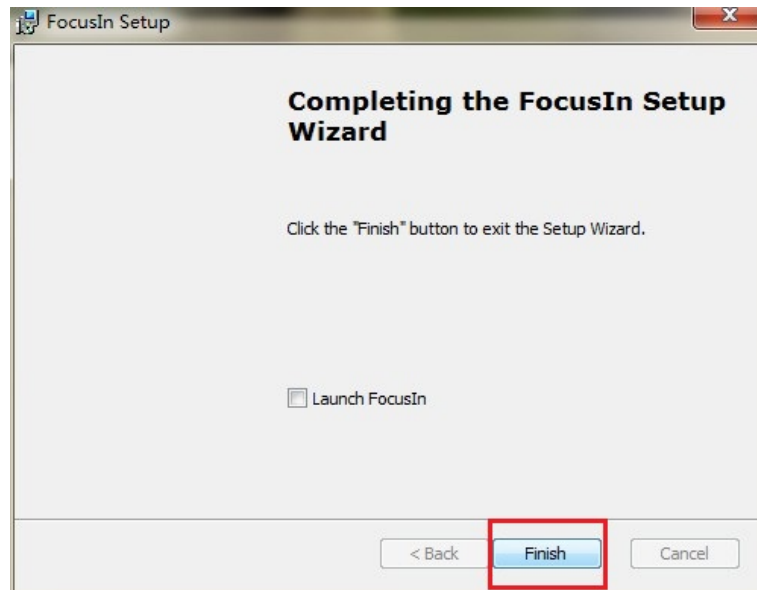
2-2-2. Click **Next**,



2-2-3. Click **Install**,



2-2-4. Click **"Finish"** to complete FI installation.



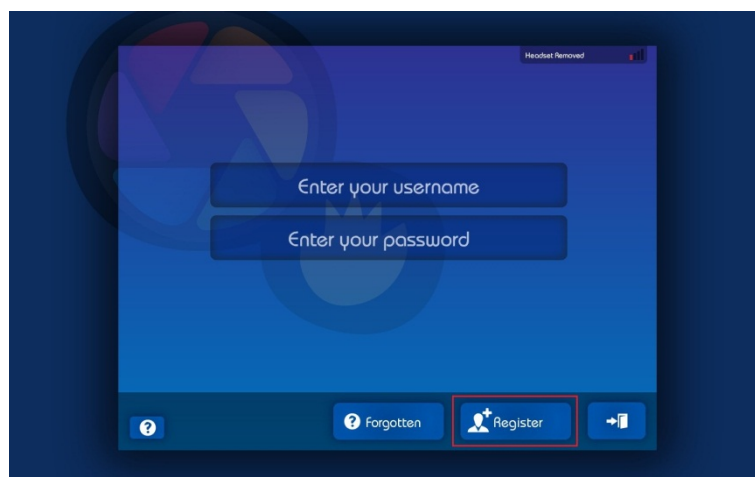
3. Start Focus Pocus Training

To start training, you need to online register account in Focus Pocus. The accounts include one parent account and several child accounts. (each child account need to be activated by license key)

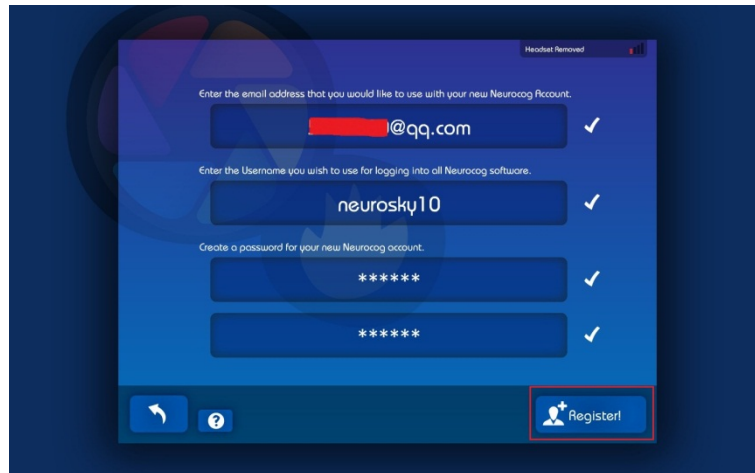
3-1. Register Focus Pocus account

3-1-1. Register parent account

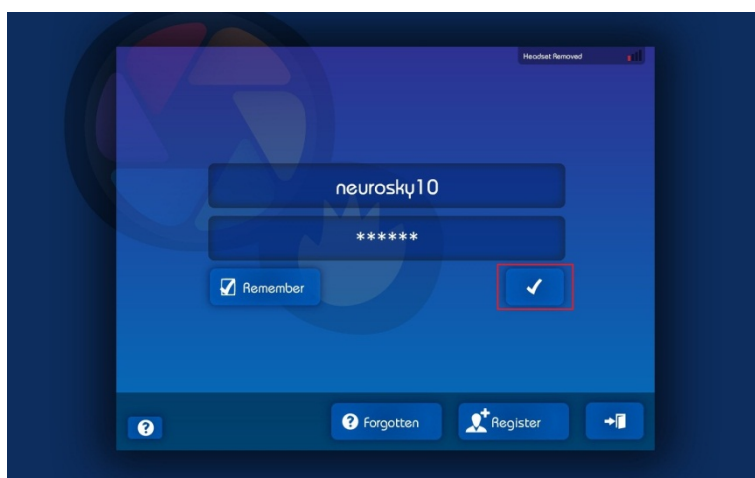
- a) Open Focus Pocus, then click **“Register”**



- b) Fill in your information, then click **“Register”**

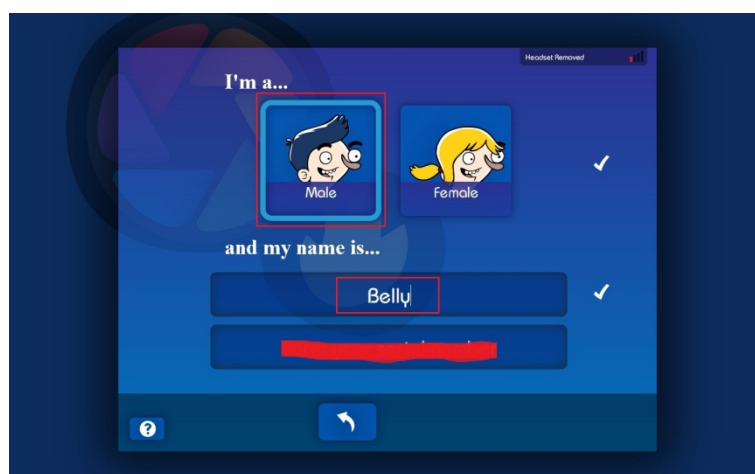


c) Enter your parent account and click “✓” to login



3-1-2. Register child account

- Click “Next”->“Close”->“Create account”
- Fill Child information, then fill in license key to activate the account.

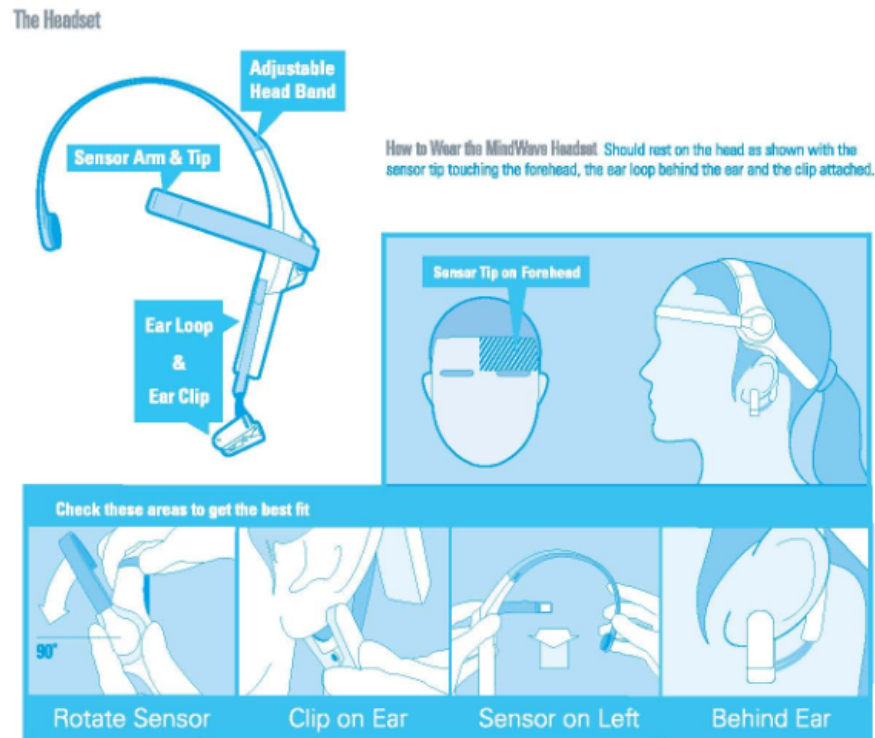


c) Set password for Child account. Now enjoy Focus Pocus!

3-2. Start Focus Pocus training

3-2-1. Wear headset

Please wear your headset as below instructions:



3-2-2. Start Focus Pocus Training

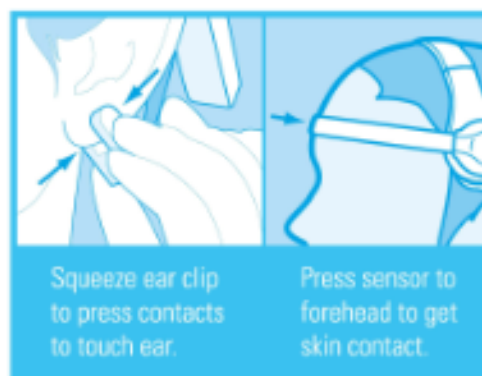
Open Focus Pocus, Login with parent account, then Child account. Then start your training sessions. To read each training instruction, please click **“Show me”**

3-3. Headset signal help

During training, If you meet problems like below picture,



Please adjust your headset as below picture



4. Check training report

Open FocusIn from desktop shortcut or Start->All Programs->Neurocog. Then Login with parent account, then you can see the training report on the page.