

ThinkGear Connector User's Guide

November 3, 2009



The NeuroSky product families consist of hardware and software components for simple integration of this biosensor technology into consumer and industrial end-applications. All products are designed and manufactured to meet exacting consumer specifications for quality, pricing, and feature sets. NeuroSky sets itself apart by providing building-block component solutions that offer friendly synergies with related and complementary technological solutions.

Reproduction in any manner whatsoever without the written permission of NeuroSky Inc. is strictly forbidden. Trademarks used in this text: eSense™, ThinkGear™, MDT™, NeuroBoy™ and NeuroSky™ are trademarks of NeuroSky Inc.

NO WARRANTIES: THE DOCUMENTATION PROVIDED IS "AS IS" WITHOUT ANY EXPRESS OR IMPLIED WARRANTY OF ANY KIND INCLUDING WARRANTIES OF MERCHANTABILITY, NON-INFRINGEMENT OF INTELLECTUAL PROPERTY, INCLUDING PATENTS, COPYRIGHTS OR OTHERWISE, OR FITNESS FOR ANY PARTICULAR PURPOSE. IN NO EVENT SHALL NEUROSKY OR ITS SUPPLIERS BE LIABLE FOR ANY DAMAGES WHATSOEVER (INCLUDING, WITHOUT LIMITATION, DAMAGES FOR LOSS OF PROFITS, BUSINESS INTERRUPTION, COST OF REPLACEMENT GOODS OR LOSS OF OR DAMAGE TO INFORMATION) ARISING OUT OF THE USE OF OR INABILITY TO USE THE DOCUMENTATION PROVIDED, EVEN IF NEUROSKY HAS BEEN ADVISED OF THE POSSIBILITY OF SUCH DAMAGES. , SOME OF THE ABOVE LIMITATIONS MAY NOT APPLY TO YOU BECAUSE SOME JURISDICTIONS PROHIBIT THE EXCLUSION OR LIMITATION OF LIABILITY FOR CONSEQUENTIAL OR INCIDENTAL DAMAGES.

Contents

Introduction	4
Installation	5
Using the Connector	6
Starting the Connector	6
Running TGC-Enabled Applications	6
Configuration	8
System Tray	8
Preferences Panel	8
Troubleshooting	10

Introduction

ThinkGear Connector is a program that runs in the background on your Windows PC, allowing special games and applications to react to your thoughts and emotions as they're detected by the MindSet™ headset. No configuration is required — just pair your MindSet with your computer via Bluetooth, launch the ThinkGear Connector, and start using TGC-enabled applications!

Installation

Simply double-click on the `setup-xxxxxxx.msi` file, which will start the automatic installer. If necessary, the installer will prompt you to install .NET Framework 3.5.

Using the Connector

Starting the Connector

Important: Before starting up ThinkGear Connector, make sure to pair your MindSet with your computer. For pairing instructions, refer to the documentation that came with your MindSet.

The ThinkGear Connector can be run from the **Start** menu, by navigating to **Programs**, then **NeuroSky**, then clicking on the **ThinkGear Connector** icon. When the ThinkGear Connector is running, an icon will appear in the System Tray. This is the default state of the ThinkGear Connector.



Figure 3.1: Idle icon

Running TGC-Enabled Applications

When a ThinkGear Connector-enabled application tries to connect, ThinkGear Connector will **automatically** search for and connect to the paired MindSet. While ThinkGear Connector is searching for the MindSet, an hourglass icon will be shown in the System Tray.



Figure 3.2: Searching for a MindSet

If the search was successful and ThinkGear Connector was able to connect to a MindSet, a notification bubble will appear, and the System Tray icon will change to a green light.



Figure 3.3: Connected to a MindSet

However, if the search was unsuccessful, ThinkGear Connector will display a notification bubble stating the error, and the System Tray icon will change to a red exclamation.



Figure 3.4: Unable to find a MindSet

To attempt the MindSet connection attempt again, you can click on the notification bubble, or click the appropriate button in the [Preferences panel](#).

Important: If ThinkGear Connector was unable to connect to a MindSet, please ensure the following:

- The MindSet is charged and is turned on
- The MindSet is paired with your computer

If you are still having problems connecting to the MindSet, refer to the [Troubleshooting guide](#).

Configuration

System Tray

By right-clicking on the System Tray icon, you can quickly be notified of the status of ThinkGear Connector, as well as perform a variety of actions.

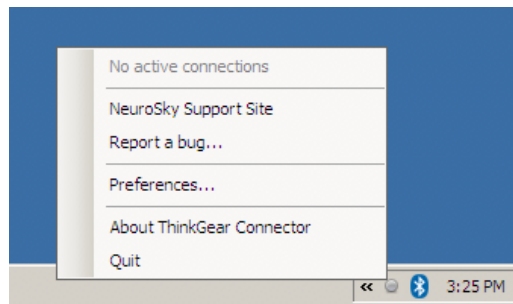


Figure 4.1: Context menu

Item	Description
<i>No active connections</i>	Display the number of applications connected to ThinkGear Connector
NeuroSky Support Site	Open a browser window to the NeuroSky support site
Report a bug...	Open up your e-mail client to report a bug to NeuroSky
Preferences...	Open up the Preferences panel
About ThinkGear Connector	Open up a panel showing miscellaneous information about ThinkGear Connector (e.g. version numbers)
Quit	Quit ThinkGear Connector

Preferences Panel

By opening the Preferences panel, you can configure a number of operating and startup options.

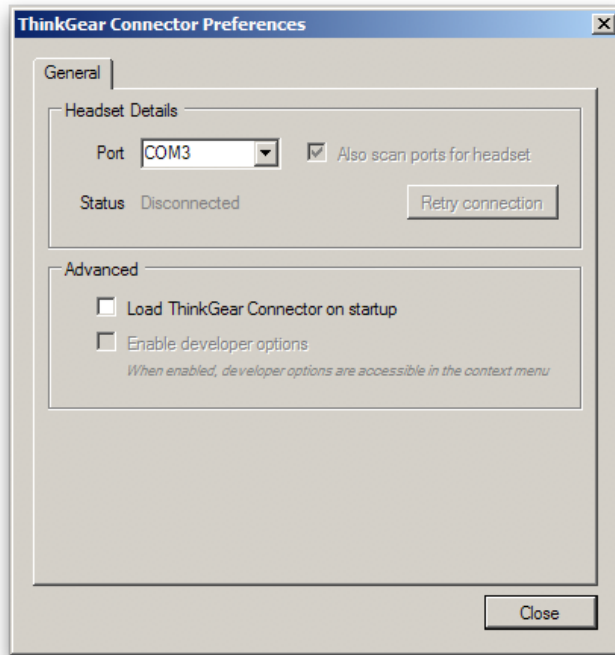


Figure 4.2: Preferences panel

Item	Description
Port	Specifies the default serial port searched by ThinkGear Connector
Also scan ports for headset	Scans all serial ports for MindSets if none was found on the default port
Retry connection	When a headset connection error occurs, this button can be pressed to retry the headset connection attempt
Status	Show the status of the headset connection
Load ThinkGear Connector on startup	If checked, ThinkGear Connector will also be started when Windows starts up
Enable developer options	Turn on options that may be useful to developers creating ThinkGear Connector-enabled applications

Troubleshooting

ThinkGear Connector doesn't seem to be able to connect to my MindSet

Check that the MindSet is turned on and paired to your computer, then retry the connection attempt several times by either clicking on the error notification balloon, or by clicking *Retry connection* in the Preferences panel. If that doesn't work, re-pair the MindSet, then restart ThinkGear Connector.

ThinkGear Connector won't start properly, because it wasn't able to listen on the desired port.

If you see an error message trying to start ThinkGear Connector, restart your computer and try starting ThinkGear Connector again.